

HiPath HG3500-DX family

Convergence and your business

The convergence of voice and data communications, based on the Internet Protocol (IP) is the core element of realtime communications, which will revolutionise the way we do business. It will generate added value by reengineering business processes.

HiPath HG3500-DX is part of the first generation of IP communication products that focus on cutting costs by efficiently utilising existing network infrastructure and by combining network management.

Businesses will achieve benefits including reductions in operating costs and improvements in asset management by the adoption of IP in their existing voice infrastructures.

HiPath HG3500-DX

HiPath HG3500-DX is a family of integrated IP gateways that offer a seamless migration into an IP infrastructure for DX customers. With these IP blades a customer can converge voice and data onto a single network infrastructure, without sacrificing traditional features and functionality.

HiPath HG3550-DX is an IP trunking blade for iSDX, Realitis and HiPath DX. It enables cost-effective networking of two or more HiPath platforms over an IP infrastructure.

HiPath HG3530-DX is an IP desktop blade for iSDX, Realitis and HiPath DX. It replaces Realitis Xpress, and offers a new range of workpoints and an analogue port adapter. Importantly, the new card can co-exist with digital and analogue extension cards already installed.

Features and benefits:

- transparent delivery of telephony features across an IP network
- integral gateway card with no requirement for external gatekeeper
- supports G.711, G.723 and G.729 AB
- full payload switching between IP endpoints and IP trunks
- new optiClient130 PC client with choice of graphical user Interfaces
- provides connectivity for the new optiPoint 410 and 420 and of workpoints

Technical specification

Common functionality

- G.711, G723.1, G729 AB codecs
- T.38 fax relay capable
- G.168 echo cancellation, VAD (Voice Activity Detection), out of band DTMF signalling
- V.34 modem via 64K clear channel codec
- Diffserv, 802.1 D (p), 802.1 Q quality of service methods
- 10/100 BaseT full/half duplex network and management interfaces
- web-based management tool
- full payload switching between HiPath IP endpoints and IP trunks.

HiPath HG3550-DX trunking functionality

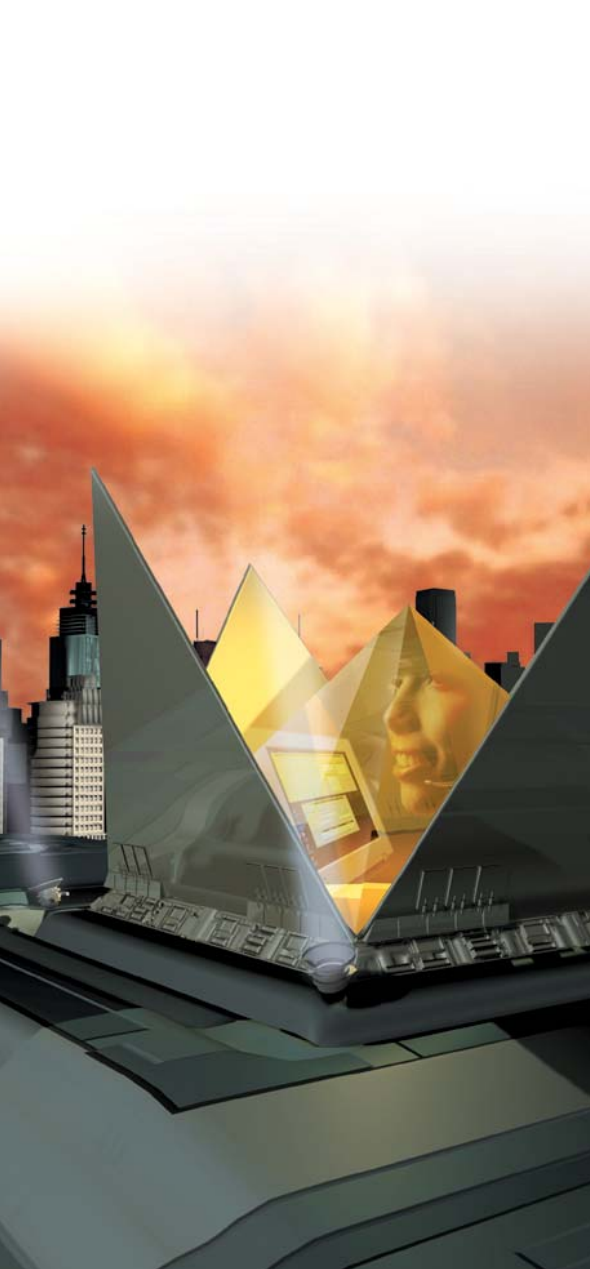
- interworking with DX version 9 and HiPath 4000 v2.0 & v3.0
- point to multipoint connection of up to 500 gateways
- feature transparency using Cornet-IP
- provides 45 or 90 channels per gateway.

HiPath HG3530-DX desktop functionality

- optiClient 130 soft client compatibility
- optiPoint 410 & optiPoint 420 compatibility with dual registration for resilience
- AP1120 analogue adaptor compatibility
- provides TDM to IP conversion for 60 or 120 simultaneous connections per gateway
- capable of supporting up to 240 workpoints (176 on iSDX) per gateway
- no requirements for external gatekeeper server.

Requirements:

- all solutions require a voicecapable LAN/WAN infrastructure
- Note - no IP inter-working between HiPath DX version 9 and HiPath 3000.

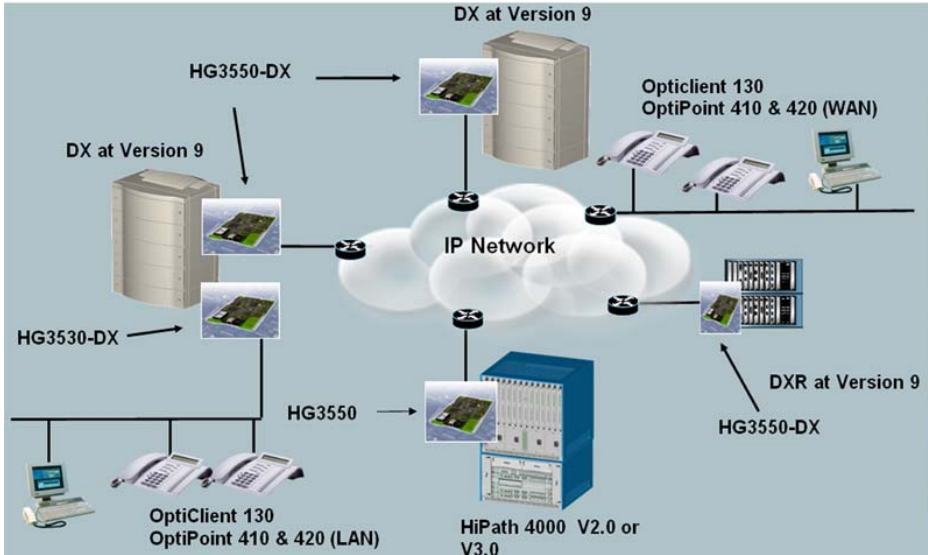


HiPath DX

SIEMENS

Global network of innovation

Network Architecture - Connectivity



HG3550-DX IP trunking to HiPath 4000 and other HiPath DX
HG3530-DX desktop to both local and remote optiPoint 410/420

Siemens Communications

The Siemens Communications Group is one of the largest players in the global telecommunications industry. The company offers a full-line portfolio of innovative solutions for voice and data communication. Its comprehensive offerings range from devices right through to complex network infrastructures and services for wireless, fixed and enterprise networks. It is the largest Group within the Siemens organization and operates in more than 160 countries around the world. In fiscal 2005 (September 30), its 54,500-strong workforce posted sales of over 13 billion euros.

Siemens Communications in the UK is part of the global telecommunications division of Siemens AG. The merger of Siemens' wireline and wireless businesses in October 2004 to form the Communications Group created one of the world's largest suppliers of telecommunications equipment and services. The division has a range of products unmatched in the industry – from network infrastructure and applications to communications devices and services – and has the expertise needed to combine these products into integrated communications solutions.

www.siemens.co.uk/hipathdx

Freephone 0800 512412

Siemens Communications
 Brickhill Street, Willen Lake, Milton Keynes. MK15 0DJ
 Tel. 01908 855000 • Fax. 01908 855001

Publication No. 1QHA 50656AAA-CAA Issue No. 03



The information provided in this document contains merely general descriptions or characteristics of performance which in case of actual use do not always apply as described or which may change as a result of further development of the products. An obligation to provide the respective characteristics shall only exist if expressly agreed in the terms of contract. Availability and technical specifications are subject to change without notice.

© Siemens plc 2006. All rights reserved. Siemens Communications – a division of Siemens plc. Siemens and HiPath are registered trademarks of Siemens AG. HiPath DX is a trademark of Siemens AG. Realitis and iSDX are registered trademarks of Siemens plc. Realitis DX is a trademark of Siemens plc. All other trademark product and company names are the property of their respective owners.